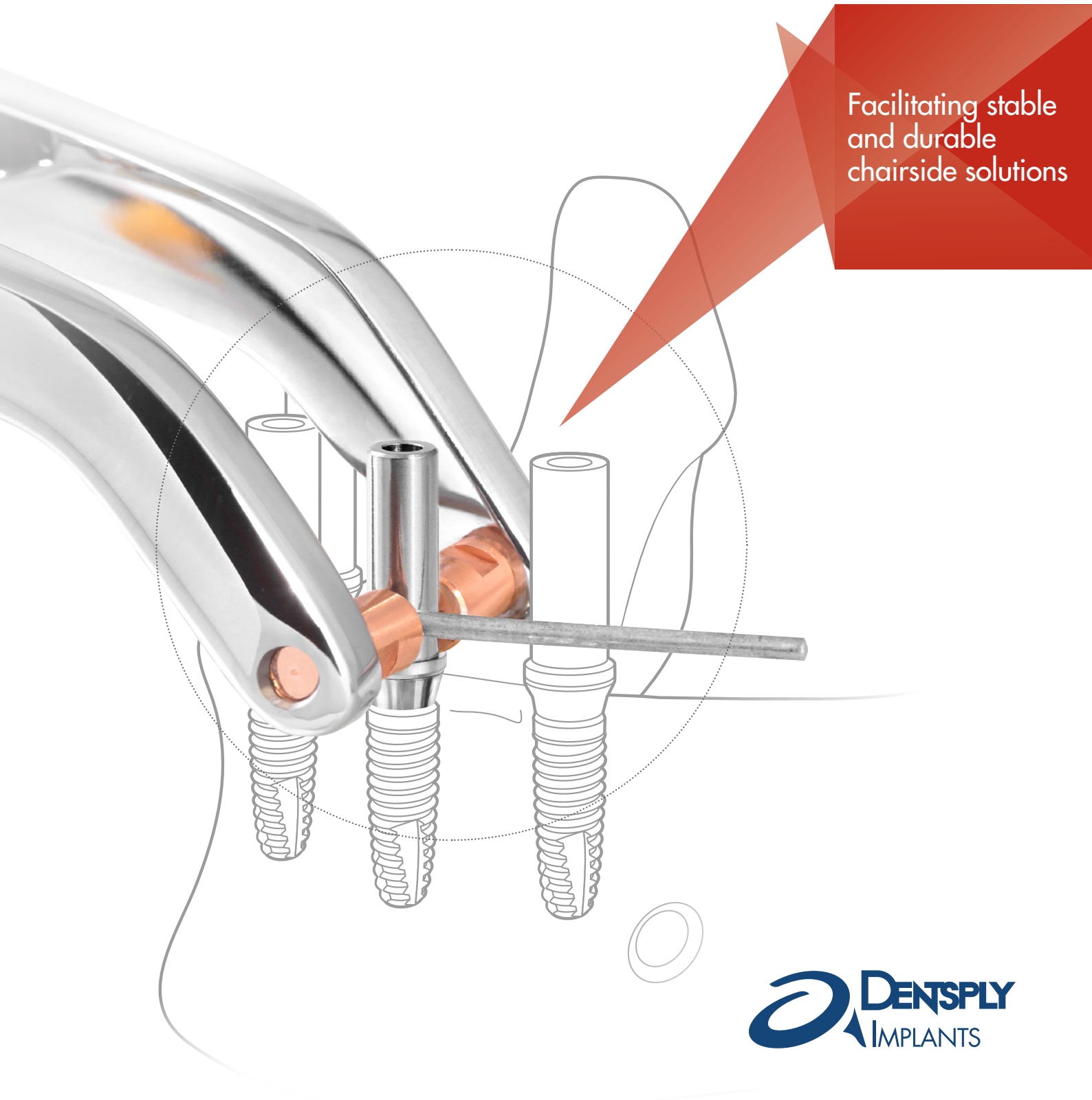
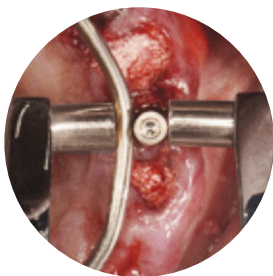




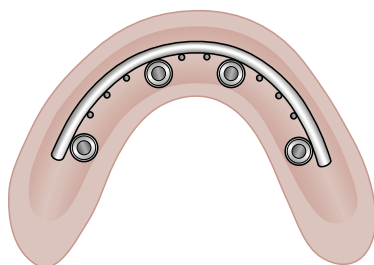
# The WeldOne™ concept

Facilitating stable  
and durable  
chairside solutions





With the help of WeldOne Welding Unit and special welding components, a titanium wire is permanently connected onto the abutment.



Immediate reinforcement of the temporary by a titanium framework.



Specially designed XiVE welding components.





What makes  
WeldOne™  
for XiVE® so  
special:

# WeldOne™ – worldwide unique

## The first complete evidence based welding concept

The WeldOne concept is worldwide unique as DENTSPLY Implants offers the first complete, proven and sophisticated concept for intraoral welding based on resistance spot welding principle.

With the help of the WeldOne Welding Unit and special welding components, a titanium wire is permanently connected to the abutment with precisely the correct force to achieve an optimum weld<sup>5</sup>. An electric current leads to fusion of the titanium material in the contact points between the titanium wire and the abutment in milliseconds.

The permanent joint between the titanium wire and the abutment enables an immediate and stable titanium framework to be made which will provide the optimum support for temporary or durable restorations.

This concept is exclusively designed for dental implants made by DENTSPLY Implants.

Different procedures of fabrication can be selected for this unique concept of prosthetic restoration:

- Temporary restorations on implant level
- Temporary or durable restorations on abutment level

The WeldOne concept provides a stable, passively fitting framework for temporary or durable prostheses for immediate restorations on the same day of surgery.

It is a fast and economical solution to deliver partial- and full-arch restorations – suitable for immediate or late loading.

- **Meets the patients' demand for immediate restorations<sup>1,2</sup>**  
Surgical procedure and prosthetic delivery on the same day of surgery.
- **Significant time and cost reduction<sup>1</sup>**  
Standardized protocol with specially designed components for a reduction of appointments to a minimum and the opportunity to reduce total treatment costs.
- **Less risks of fractures on temporaries<sup>4,5</sup>**  
Immediate reinforcement of the temporary by a titanium framework.
- **Safely and predictably for immediate loading treatment<sup>1,3,5</sup>**  
As a consequence of reduced mobility of implants due to immediate rigid splinting a risk of implant failures during healing phases can be minimized.
- **No additional impression-taking of implants necessary<sup>1,4</sup>**  
Simultaneous delivery of a titanium framework on implant abutments at one time. Advantage of the one abutment at one time philosophy in case of abutment level restorations.

1 | Degidi, M., D. Nardi, and A. Piattelli, Immediate rehabilitation of the edentulous mandible with a definitive prosthesis supported by an intraorally welded titanium bar, in *Int J Oral Maxillofac Implants*, Yes, Editor. 2009, 01 until 03 years. p. 342-7. 2 | Avvanzo, P., et al., Use of intraoral welding to stabilize dental implants in augmented sites for immediate provisionalization: a case report. *J Oral Implantol*, 2012. 38(1): p. 33-41. 3 | Degidi, M., G. Daprile, and A. Piattelli, Implants inserted with low insertion torque values for intraoral welded full-arch prosthesis: 1-year follow-up, in *Clin Implant Dent Relat Res*, Yes, Editor. 2012, 00 until 01 year. p. e39-40. 4 | Degidi, M., et al., Syncrystallization: a technique for temporization of immediately loaded implants with metal-reinforced acrylic resin restorations, in *Clin Implant Dent Relat Res*, Yes, Editor. 2006, 00 until 01 year. p. 123-34. 5 | DENTSPLY Implants internal fatigue, strain and welding tests on file

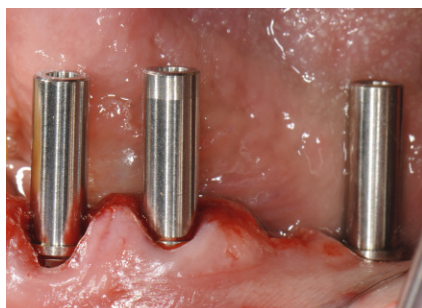


A close-up portrait of an older man with white hair, smiling slightly. He is wearing a dark suit jacket over a light blue shirt. The background is a blurred green landscape.

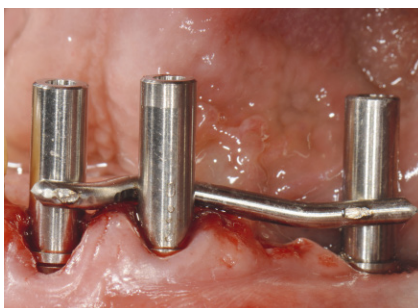
“Vision  
becomes  
reality”

Dr. Marco Degidi  
Bologna, Italy





Placement of the XiVE temporary welding abutments



Intraorally welded titanium framework



Completed restoration

Courtesy Dr. Marco Degidi,  
Bologna, Italy

# Intra-oral welding

## Known for decades – now brought to perfection

The inventors of this concept are Dr. Marco Degidi and his dental technician Gianluca Sighinolfi both from Bologna, Italy. Their excellent knowledge, craftsmanship and teamwork are the basis for the successful creation of this unique stable and durable chairside concept. The teamwork of the surgeon and the dental technician is key for success.

Although the WeldOne concept is cutting-new, an impressive amount of publications in peer reviewed journals is already available (see below).

The WeldOne concept is an advanced protocol addressed to surgeons and prosthodontists that already have experience with immediate loading treatment.

Special training courses tailored to meet the indication requirements and the experience level are highly recommended. Please see last page of this brochure for course offers or contact your local representative.

### Additional product information:



### Dr. Marco Degidi Bologna, Italy

Active member of the Academy of Osseointegration, Diplomate of International College of Oral Implantology. Private Practice in Bologna, restricted to implant surgery & prosthetics. Adjunct Professor, Postgraduate Program in Clinic Implantology and Biomaterials, University of Chieti. Adjunct Professor, Postgraduate Master in Clinic Implantology, University of Bologna. Speaker in many national and international seminars, congresses and courses; many national and international publications.



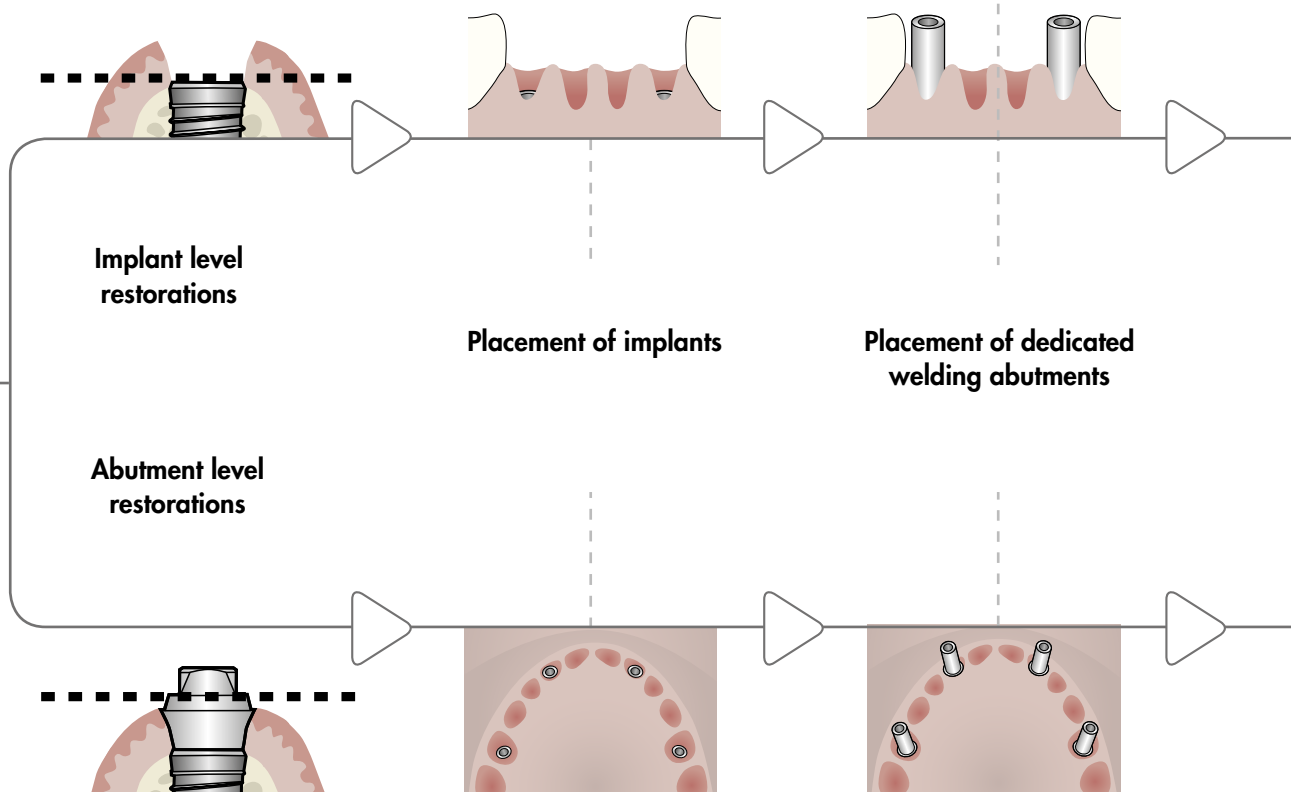
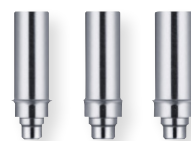
### Gianluca Sighinolfi, Bologna, Italy

In 1989 he was awarded his diploma from the Villaggio del Fanciullo in Bologna, Italy. He immediately began work in an important dental lab in Bologna, later to become a partner. He has had extensive specialist training and conducted courses both in Italy and internationally. Since 1996, Gianluca has collaborated with Dr Marco Degidi and Prof Piattelli on immediate loading research, contributing to the development of new surgery protocols and numerous articles on this subject that have been published in leading international reviews and journals.

# Step-by-step

The WeldOne™ concept for XiVE®

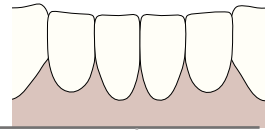
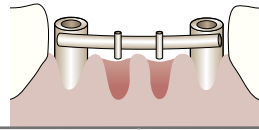
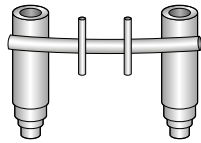
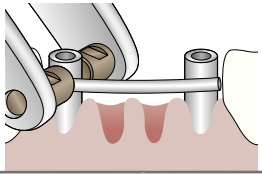
*Specially designed XiVE  
Temporary Welding Abutments*



*XiVE  
Welding  
Sleeve for  
D 3.4 / D 3.8*



*XiVE  
Welding  
Sleeve for  
D 4.5*

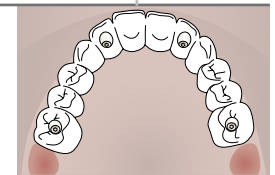
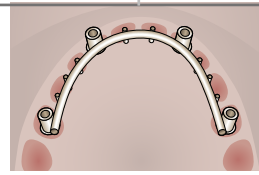
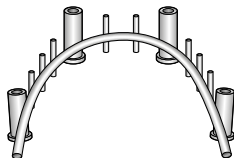
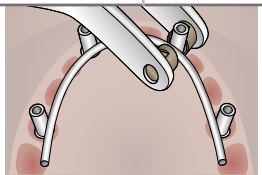


**Bending, alignment  
and intraoral welding of  
titanium wire**

**Extraorally welded  
retentions are added to  
the framework**

**Finalized and opaque coated  
titanium framework**

**Completed restoration**



# The WeldOne™ concept

*Specially created WeldOne  
Welding Unit with touch screen  
and easy menu guidance*





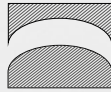


It is recommended to use the following custom-built tools manufactured by USTOMED. This handful of simple tools allows you to create a titanium framework with a few simple steps. To get detailed information, please contact USTOMED directly: [www.ustomed.de](http://www.ustomed.de)

The WeldOne™  
concept for  
XiVE® –  
designed function



**Sharp Curver**  
bends the bar into  
more acute angles  
for single abutments.



**Soft Curver**  
bends the titanium  
bar along the curve  
of the arch.



**Holder**  
grasps and holds the  
titanium bar firmly  
in place during the  
welding process.



**Cutter with tungsten  
carbide inserts**  
easily and efficiently  
cuts off excess  
material.



Specially designed XiVE  
welding components



Three sizes of titanium wires to ensure  
the stability of the framework according  
to the right application and respective  
indication.

# Products

The WeldOne™ concept for XiVE®

## WeldOne™ Welding Unit

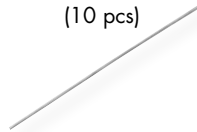


Reduced  
scale

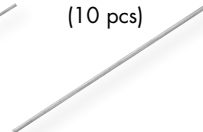
**Titanium Wire**  
**D 1.2 / L 100**  
**Grade 2**  
(10 pcs)



**Titanium Wire**  
**D 1.5 / L 150**  
**Grade 2**  
(10 pcs)



**Titanium Wire**  
**D 2.0 / L 150**  
**Grade 2**  
(10 pcs)



|           |           |           |           |           |
|-----------|-----------|-----------|-----------|-----------|
| Order no. | 47 – 4710 | 47 – 3012 | 47 – 3013 | 47 – 3014 |
|-----------|-----------|-----------|-----------|-----------|

## XiVE® MP Welding Sleeve



Scale 1.2:1

D 3.4 / D 3.8



D 4.5

|           |             |             |
|-----------|-------------|-------------|
| Order no. | 45 – 4741 * | 45 – 4751 * |
|-----------|-------------|-------------|

## XiVE® Temporary Welding Abutment



Scale 1.2:1

D 3.4



D 3.8



D 4.5

|           |             |             |             |
|-----------|-------------|-------------|-------------|
| Order no. | 46 – 1231 * | 46 – 1241 * | 46 – 1251 * |
|-----------|-------------|-------------|-------------|

\* incl. retaining screw

# Expert training

## The WeldOne™ concept for XiVE®

Please contact your local sales representative to learn more about WeldOne™ product availability and specifications, trainings and congress presences.

- Practical and theoretical approach
- Hands-on supported

To gain the maximum benefit from the course, it is recommended that your lab technician attends the course as well.



#### About DENTSPLY Implants

DENTSPLY Implants offers comprehensive solutions for all phases of implant therapy, including ANKYLOS®, ASTRA TECH Implant System™ and XiVE® implant lines, digital technologies, such as ATLANTIS™ patient-specific CAD/CAM solutions and SIMPLANT® guided surgery, SYMBIOS® regenerative solutions, and professional and business development programs, such as STEPPS™. DENTSPLY Implants creates value for dental professionals and allows for predictable and lasting implant treatment outcomes, resulting in enhanced quality of life for patients.

#### About DENTSPLY International

DENTSPLY International Inc. is a leading manufacturer and distributor of dental and other healthcare products. For over 115 years, DENTSPLY's commitment to innovation and professional collaboration has enhanced its portfolio of branded consumables and small equipment. Headquartered in the United States, the Company has global operations with sales in more than 120 countries.

Follow DENTSPLY Implants



[www.dentsplyimplants.com](http://www.dentsplyimplants.com)

