

B&L Biotech

Product Catalog



B&L Biotech was established by several dentists.

These dentists who are specialized in endodontics share a common goal of providing and improving the quality of treatment delivery and patient care with unprecedented innovation, excellence, quality, service and product development.

B&L is one of the fastest rising companies in the global dental community. B&L has partnered with a leading dental company to introduce the first cordless heated plugger system and gutta percha delivery system, known respectively as the B&L Alpha and B&L Beta. B&L has many innovative products to offer, including patented micro-projection ultrasonic tip technology, and is working to develop many more products.

B&L currently services over 32 countries. In May 2010, B&L opened its first facility in the USA, just outside of Philadelphia, to better serve the global dental community.

B&L Biotech continues to expand its pipeline to innovative products while maintaining quality, excellence and service to the worldwide dental community.



Obturation Devices

Ultrasonic Tips





Cordless Obturation devices

SuperEndo-α ²	4
SuperEndo-β	6
BL-S Kondenser	8

Endodontic Ultrasonic Tip with Micro-projection

BL Tip	9
--------	---

Endodontic Microsurgical Ultrasonic Tip with Micro-projection

JETIP	10
-------	----

Removal of Broken Instruments / Troughing & Irrigation

CK TIP	11
--------	----

Post Removal Tip

VIBRAPOST	11
-----------	----

Implant Scaler Tip

IS TIP	12
--------	----

Scaler Tip

S TIP	12
-------	----

Ultrasonic Tip Accessories

13



Microsurgical Instruments

JETIP Instrument Basic Set	14
JETIP Instrument Suture Set	15

Bendable Periosteal Elevator for Surgical Treatment

KimTrac	16
---------	----

Clinical Cases

18

Cordless Obturation Device for Optimal Warm Vertical Condensation

SuperEndo- α^2 Starter Kit



Maximizes user convenience

Unique design that incorporates cordless and ergonomic features.

Balance

Great weight distribution for ease of use.

Cordless

No limit on usage, reduces fatigue on hand and wrist.

Hexagonal keyholes

Six keyholes (in increments of 60 degrees) on the connecting joint of the plugger safely secure and prevent rotation of the plugger during use.

Extended battery time for operator

4 hours of continuous use on a single charge, equivalent to about 1 week of endodontic treatment in a busy practice.

Starter Kit

SuperEndo- α^2 with 3 pluggers.(#55/.06, #55/.08, #55/.10)

Item Code

Starter Kit : ASKB(Black), ASKW(White)

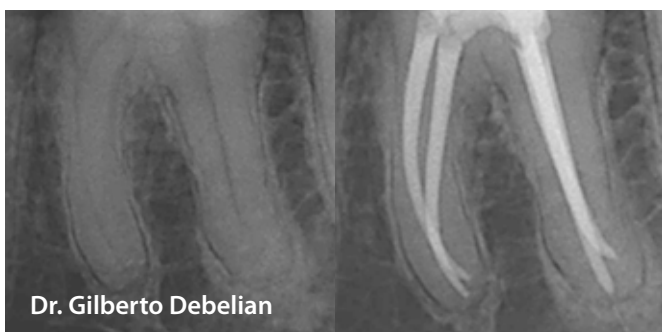
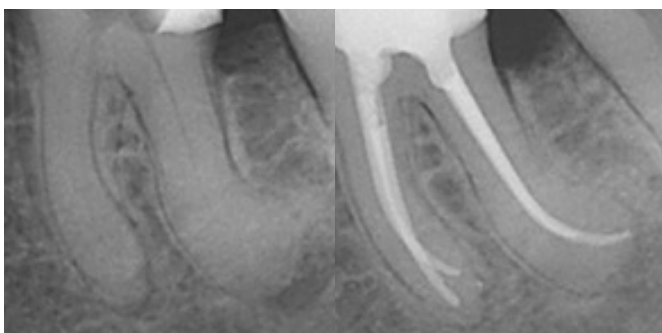
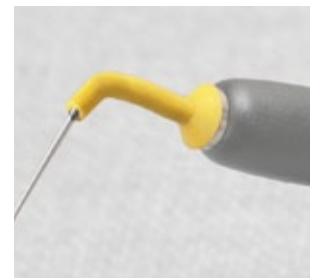
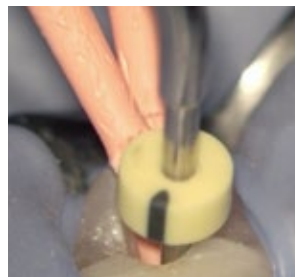
Main device : BAMB(Black), BAMW(White)

Charging console : BACCB(Black), BACCW(White)

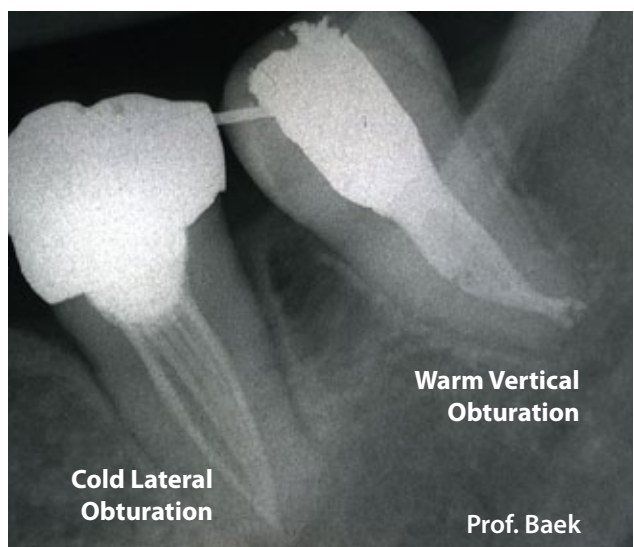
Battery enclosure : BABEB(Black), BABEW(White)

Battery : BAB

Plugger Protect Sleeve(10EA) : BPPS



Dr. Gilberto Debelian



Cold Lateral
Obturation

Warm Vertical
Obturation

Prof. Baek

Accessories for SuperEndo-α²

BL Plugger

Pluggers for SuperEndo-α²

The greatest number of choices: 13 items, including pluggers, spreaders, and a hot testing tip.



Accessories for B&L-α2

Paper Point / GP Point



Model	Size	Item Code	Packages
Paper Point	#15 / .04	PP1504	200 EA
	#20 / .04	PP2004	
	#25 / .04	PP2504	
	#30 / .04	PP3004	
	#35 / .04	PP3504	
	#40 / .04	PP4004	
	#50 / .04	PP5004	
GP Point	Assorted type (#25/.06, #30/.04, #35/.04)	AGP	60 EA
	#25 / .06	GP2506	
	#30 / .04	GP3004	
	#35 / .04	GP3504	
	#40 / .04	GP4004	

Cordless Obturation Device for Optimal Backfill

SuperEndo- β Starter Kit



Unique design and engineering

Incorporates the 360 degree Swivel Needles, as well as cordless and ergonomic features, for maximum user convenience.

Balance

Great weight distribution for ease of use

Cordless

No limit on usage, reduces fatigue on hand and wrist

Secondary safety feature against accidental burns

Thermal protector cap that prevents accidental burns from a hot needle or gutta percha.

Extended battery time for operator

4 hours of continual use on a single charge, equivalent to about 1 week of endodontic treatment in a busy practice.

Starter Kit

SuperEndo- β with needles.

(24mm/20G 2pack, 24mm/23G 4pack, 24mm/25G 2pack)

Item code

Starter Kit : BSKB(Black), BSKW(White)

Main device : BBMB(Black), BBMW(White)

Charging console : BBCCB(Black), BBCCW(White)

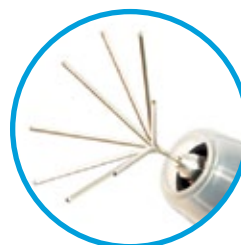
Battery : BBB

Thermal Protector(3EA) : BTP

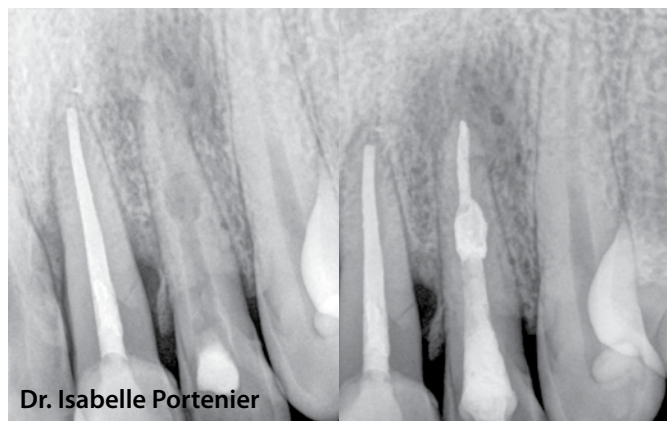
Plunger assembly : BPA

Cleaning Brush(2EA) : BCB

Needle protector sleeve(10EA) : BNPS



Needle Swivel for Easy Access



Dr. Isabelle Portenier



Dr. Lissette Ramirez

Accessories for SuperEndo-β

Needle

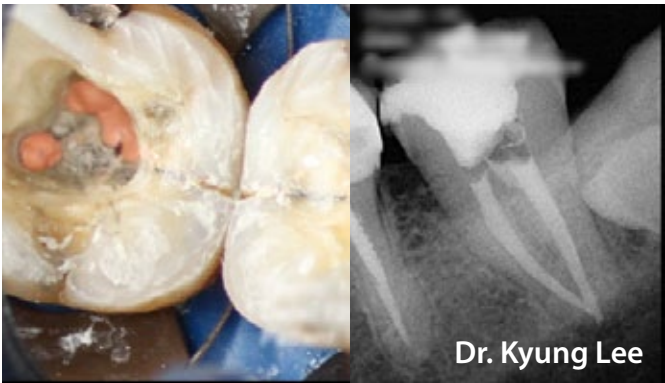
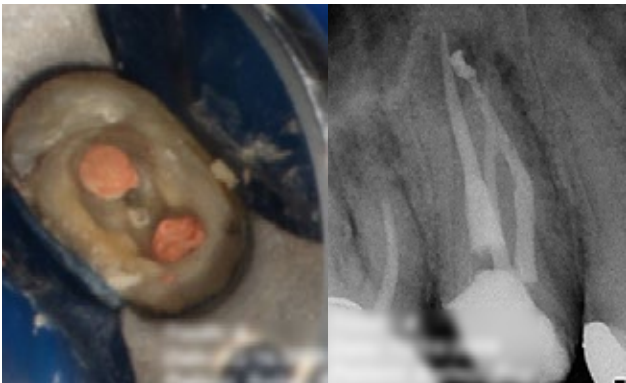


Needles for SuperEndo-β

Item Code
Needle Bender/Wrench : BMT

Item Code	Gauge	Length
BSN2220	20 (0.82mm)	22 mm
BSN2420	20 (0.82mm)	24 mm
BSN2820	20 (0.82mm)	28 mm
BSN2123	23 (0.57mm)	21 mm
BSN2423	23 (0.57mm)	24 mm
BSN2823	23 (0.57mm)	28 mm
BSN2225	25 (0.45mm)	22 mm
BSN2425	25 (0.45mm)	24 mm
BSN2625	25 (0.45mm)	26 mm
BSN5020 (VET)	20 (0.82mm)	50 mm

*Swivel only



Dr. Kyung Lee

Accessories for SuperEndo-β

Gutta Percha Pellet



Gutta Percha Pellets for SuperEndo-β

Item Code	Type	Quantity of GP
BGPSOFT	Soft Type	100 EA
BGPREG	Regular Type	100 EA
BGPHARD	Hard Type	100 EA

BL-S Kondenser



Wide variety

BL-S Kondensers may be purchased individually or in a full set of 4.

Efficiency of use

Handles are color-coded depending on size for faster selection of the needed condenser.

Range of use

BL-S Kondensers are great for any type of canal anatomy.

Multipurpose features

One end, made of nickel titanium, can be used for treatment in curved canals. The other end, flat and made of stainless steel, is ideal for compaction in the coronal and middle thirds of the canal.

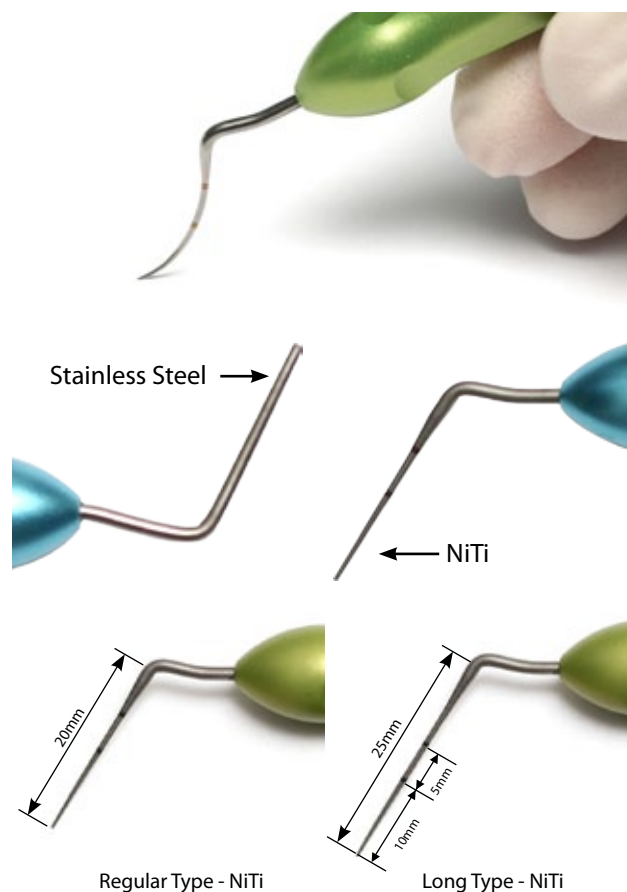
Lightweight design

Handles are designed to fit comfortably into the user's natural grip.

Increased control

Dimpled grips allow the condenser to be held firmly.

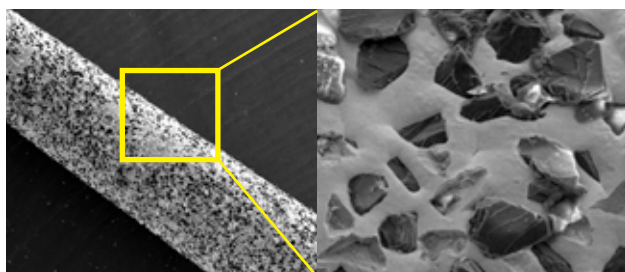
Autoclavable



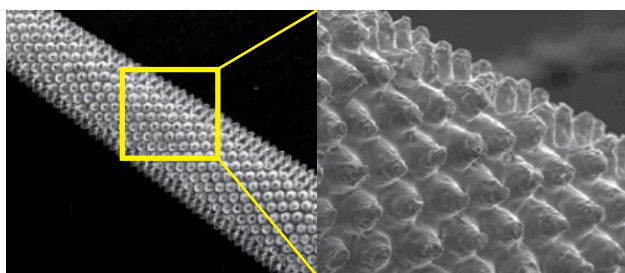
Item Code	Product information
BCONSET / BCONSET Long Type	SET of 4 (35, 40, 50, 60)
BCON35 / BCON35 Long Type	35 NiTi / 70 SS
BCON40 / BCON40 Long Type	40 NiTi / 80 SS
BCON50 / BCON50 Long Type	50 NiTi / 100 SS
BCON60 / BCON60 Long Type	60 NiTi / 120 SS

Endodontic Ultrasonic Tip with Micro-projection

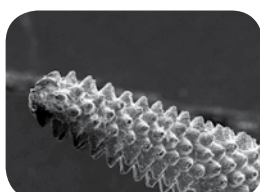
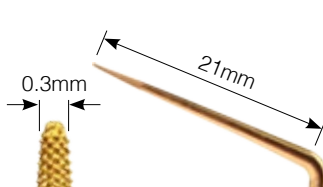
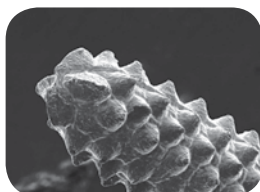
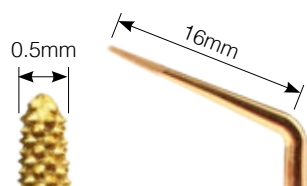
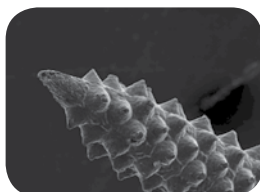
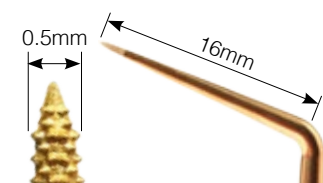
BL TIP



Diamond coated Tip



BL TIP with Micro-projections



B&L non-surgical ultrasonic tip

Longevity and Safety with Micro-projections

BL Tips have sharp abrasive micro-projections integrated onto the main body of the tip.

Unlike conventional diamond coated endodontic tips, whose coating wears off during surgery, tips with microprojections are more resilient and efficient in cutting

Manageable Elimination with a Variety of Shapes and Sizes

The end of the BL Tips comes in a variety of shapes and sizes making it convenient for the doctor to effectively control the amount of dentin removal.

100µm Micro-projections : ideal for removing larger quantities of dentin.

50µm Micro-projections : ideal for more precision-based refinement.

Versatility

BL Tips are useful not only in accessing the root canal, but also in enlarging the coronal aspect of the root canal because the end of the tip works in every direction.

Item Code

Starter Kit : BLSKA(BL1,3,5 Sateltec), BLSKE(BL1,3,5 EMS)

BL-1 : BL1A, BL1E

BL-3 : BL3A, BL3E

BL-5 : BL5A, BL5E

Appropriate power level

BL-1	BL-3	BL-5
SATELEC®	20% · 30%	Under 20%
EMS®	10% · 20%	Under 10%

E-Type not available for sale in the US.

BL-1 (100µm Micro-projections)

Removal of pulp stone, calcified dentin
Location of the MB2 canal and hidden canals
Removal of gutta percha and paste materials

BL-3 (100µm Micro-projections)

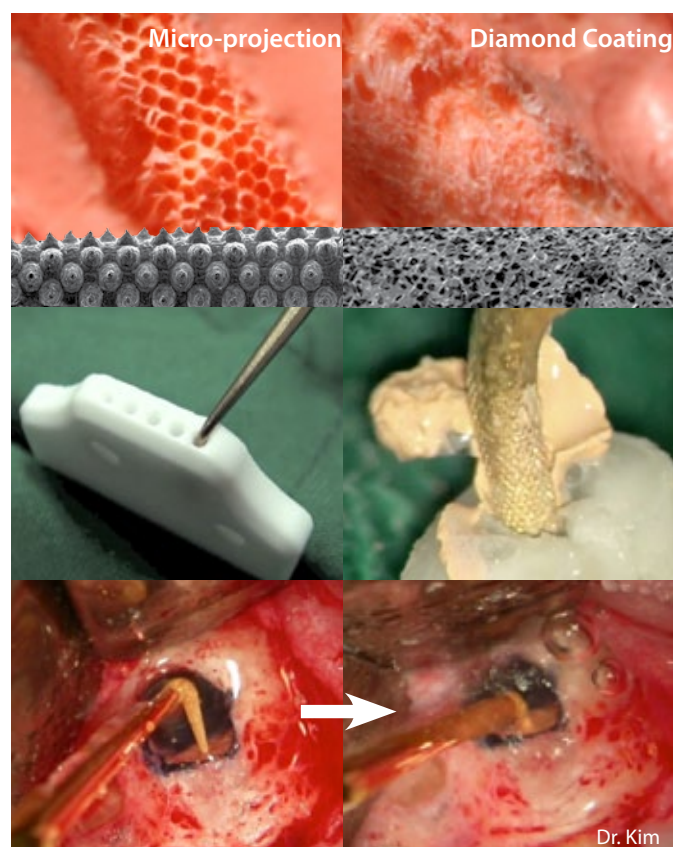
Use at a higher power, higher speed
Removal of secondary dentin and pulp stones
Resistance to breakage

BL-5 (50µm Micro-projections)

Smaller & longer than BL-1
Sharper and longer shape allows efficient preparation of the coronal half of the canal and creates a space for the insertion of a file.
Bendable tip so that its user can change it to his or her desired angle.

Microsurgical Ultrasonic Tip with Micro-projection

JETIP



JT-2 series for Micro-Surgery (Anterior, Posterior)

Bent Body Angle: 150°

Micro-projection Size: 50µm

JT-2B represents the popular bendable tip. This tip allows clinicians to bend the tip **ONLY** once in one direction to any length and/or angle to suit their clinical needs.

JT-2S has one angle tip with a "straight" body.

JT-2L has two angles bent to the left with a "straight" body.

JT-2R has two angles bent to the right with a "straight" body.

Bendable Apical Surgery Tips

JETip is an apico surgery tip that allows clinicians to bend the tip to any length and angle to suit their surgical needs.

Longevity and Safety with Micro-projection

JETips have sharp, abrasive micro-projections integrated onto the main body of the tip.

Unlike conventional diamond coated endodontic tips, whose coating wears off during surgery, tips with micro-projections are more resilient and efficient in cutting.

Versatility

JETips have a variety of shapes and sizes, so users can effectively control the amount of gutta percha and dentin removal.

They remain stable during the removal of gutta-percha.

Bending Jig

Optional Length and Angle

The Bending Jig is made of a soft material in order to provide clinicians with the freedom to choose angles and lengths without damaging the micro-projections.

The Bending Jig has five depths(3, 4, 5, 6, and 7mm) in order to allow clinicians to bend the tip to different lengths.

One aperture may be used up to 2-4 times.

Item Code

Full set : JT2FA(Satelec), JT2FE(EMS)

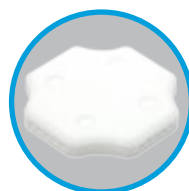
JT-2S : JT2SE(Straight), JT2LE(Left), JT2RE(Right), JT2BE(EMS)

Appropriate power level



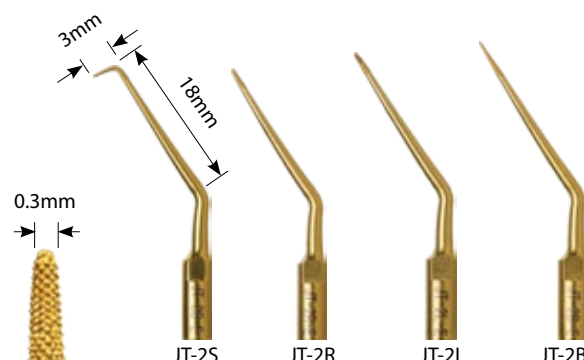
SATELEC®	10% · 20%
EMS®	Under 10%

E-Type not available for sale in the US.



Bending jig for JETIP bendable type

Item Code : JTBJ



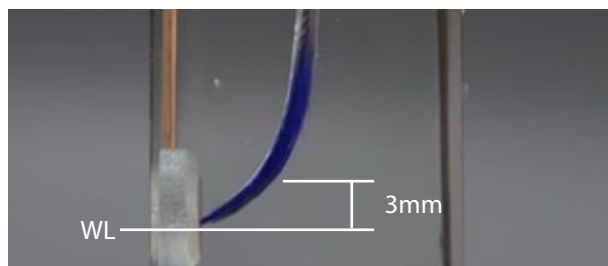
Removal of Broken Instruments / Troughing & Irrigation

CK TIP



CK TIP with CK File Irrigation

CK TIP with CK Needle Troughing



Optimal use for CK file - 3mm above WL (Working Length)

For ultrasonic energy in a root canal

Ultrasonic vibration through a file ensures an efficient cleaning of the root canal system through acoustic micro-streaming.

Item Code	Compatibility	Bent Angle
CK1E	EMS scaler	120°
CK1A	SATELEC scaler	
CK2E	EMS scaler	90°
CK2A	SATELEC scaler	

E-Type not available for sale in the US.

CK File

Item Code : CKF

Irrigation File #20

Item Code	Recommended Power Level
CK FILE-20	10%

CK Needle

Item Code : CKN

Removal of separated files

Useful in removing dentin (troughing)

Isthmus control

Before working with the Vibrapost, use the CK Needle to trough around the post allowing the Vibrapost to work more efficiently.

Post Removal Tip

VIBRAPOST



The best choice for removing a post from a root canal

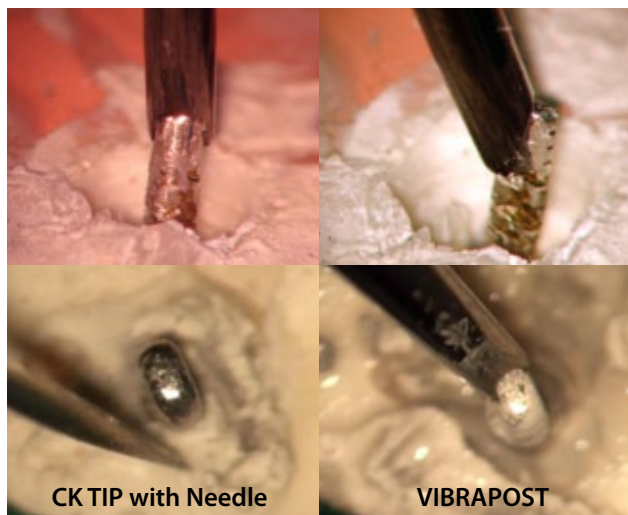
The most efficient shape to constantly deliver the highest ultrasonic energy.

Item Code	Recommended Power Level
VP-A(SATELEC)	60% Power
VP-E(EMS)	

E-Type not available for sale in the US.

Caution!

In order to avoid potential damage to the periodontal ligament from excessive heat, be sure to work with water and refrain from engaging the post for more than 15 seconds at a time.



CK TIP with Needle

VIBRAPOST

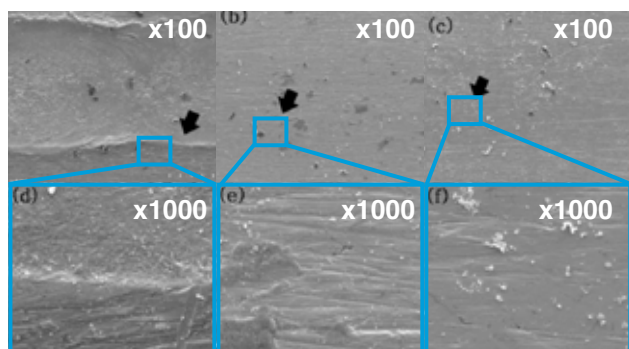
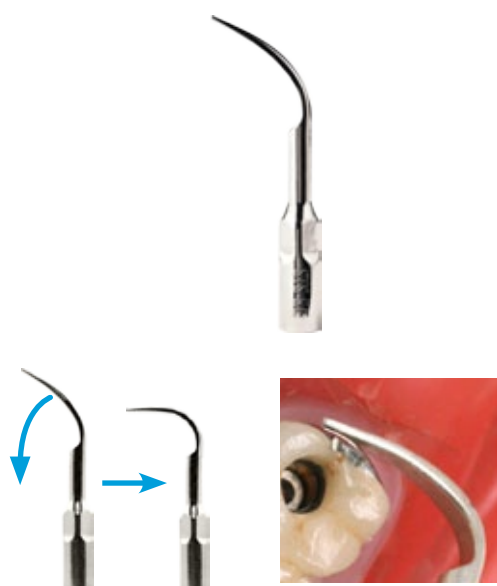


Dr. Jorge Vera

Dr. Carlos Saucedo

Implant Scaler Tip

IS TIP



Stainless Steel Tip Carbon Tip B&L IS Tip
 Reference : Hyon-Woo Seol, Seong-Joo Heo, "Effect of New Ultrasonic Tip on Several Dental Material Surface, The class of dental prosthesis", Dental school of Seoul National University

The dependable choice for peri-implant tissue management

Why choose B&L's implant scaler tip?

Metallic ultrasonic tip designed for scaling polished implant surfaces.

Compatibility with electric piezo unit.

Optimal scaling efficiency with minimal abrasiveness to the external polished surface of the implant.

Ideal periodontal management of implant.

Safer and more efficient than other plastic and titanium implant curettes.

Ideal for removal of residual cement.

Sharpness

Avoids excessive opening of the gingival sulcus.

Accessibility

Provides easier access to the distal lingual gingiva of a molar.

Bendable tip point can be used to reach hidden areas.

Usage

Ideal for periodontal maintenance of the implant.

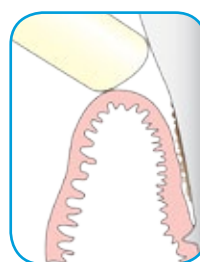
Ideal for treatment of peri-implantitis.

Ideal for removal of excess cement.

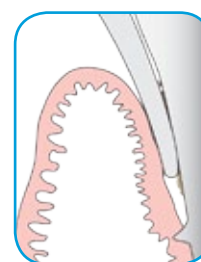
Disposable

Item Code : STS5A(SATELEC compatible)

STS5E(EMS compatible)



Normal TIP



B&L IS TIP

Scaler Tip

S TIP



"I was amazed with the efficiency of B&L scaler tip. It is the best scaler tip that I have used thus far."

- Dr. Sean Kim (Private Practice in New Jersey; Alumni of Columbia University)

Item Code : STS1A(SATELEC compatible), STS1E(EMS compatible)

STL1E(Long type, Only EMS compatible)

STS2A(SATELEC compatible)

Excellent Durability

Long Lifespan: The advances of the new tip allow for longer usage and maintenance of the integrity of the scaler tip's shape and function without deformation.

The S Tip can be sterilized by chemical sterilization or autoclaving without compromising the quality and the integrity of the tip.

Excellent Anti-Corrosive Properties

The S Tip has anti-corrosive properties that prevent degradation of the tip even after being exposed to 5% sodium hypochlorite for 30 days. Any conventional tip will slowly dissolve under this condition.

Biocompatibility and Optimal Efficiency

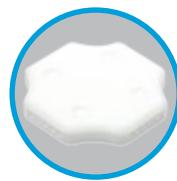
The S Tip allows for optimal scaling results with less hassle. Conventional scaler tips can easily damage the external surface of a tooth due to the tips' rigidity and lack of resilience. However, the S Tip is composed of an advanced, resilient material that resembles the external surface of a tooth. This unique property of the S Tip provides for excellent biocompatibility with the surface of a tooth due to its optimal scaling efficiency and minimal abrasiveness.

Ultrasonic Tip Accessories



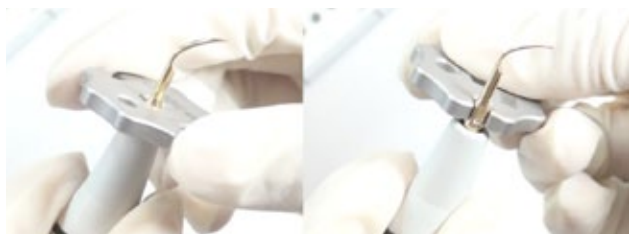
Wrench for Ultrasonic Tips

Item Code : WR01



Jig for JETIP bendable type

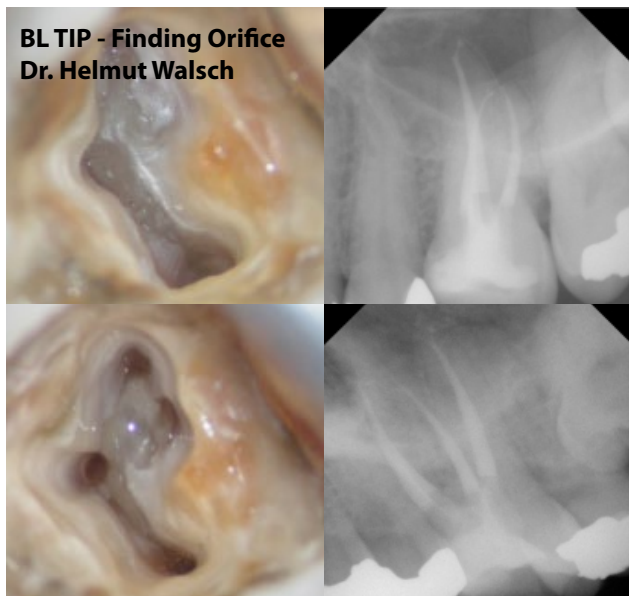
Item Code : JTBJ



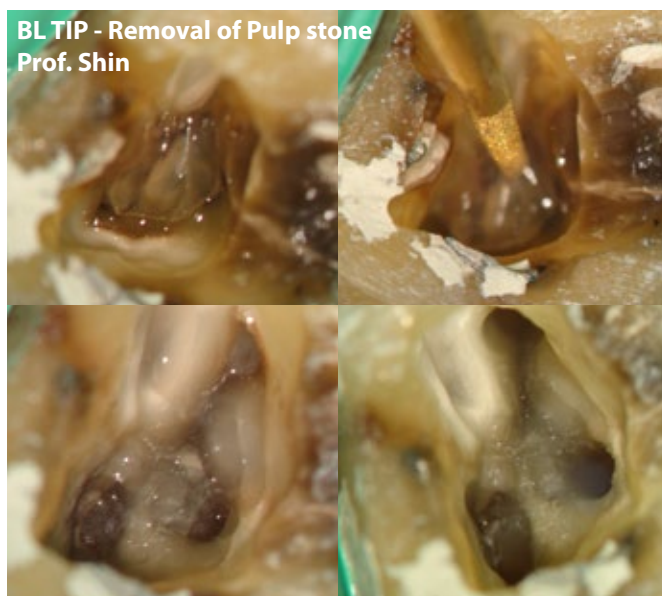
B&L Ultrasonic Tips

Clinical Cases

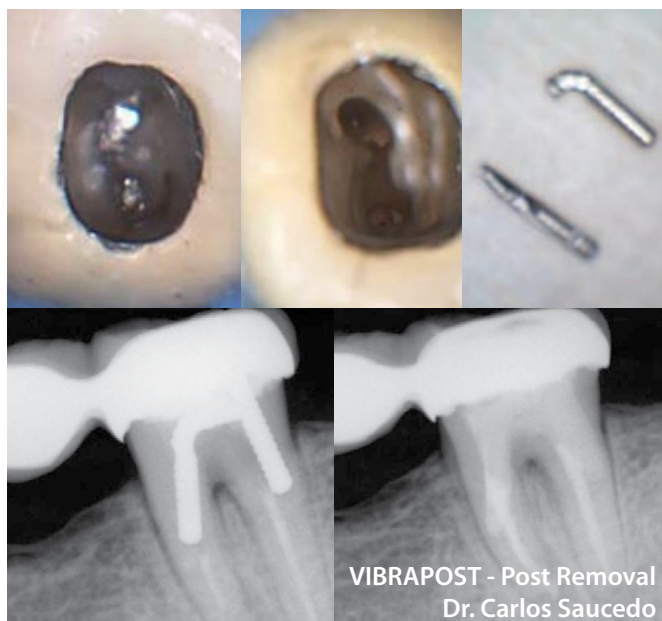
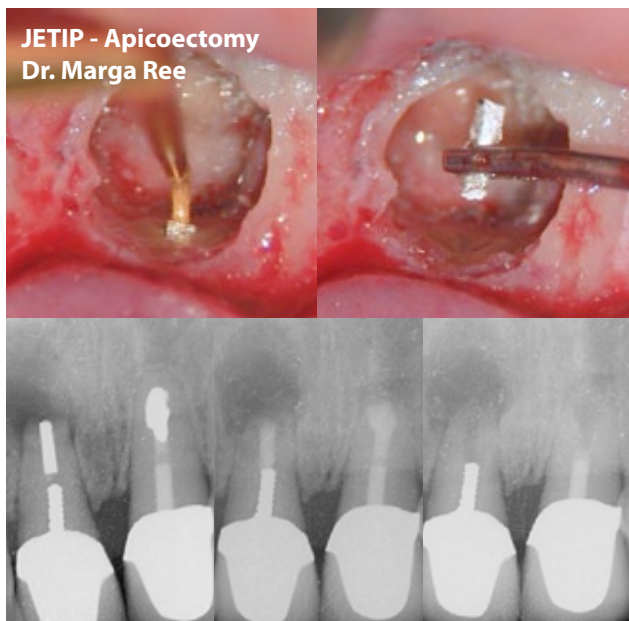
BL TIP - Finding Orifice
Dr. Helmut Walsch



BL TIP - Removal of Pulp stone
Prof. Shin



JETIP - Apicoectomy
Dr. Marga Ree

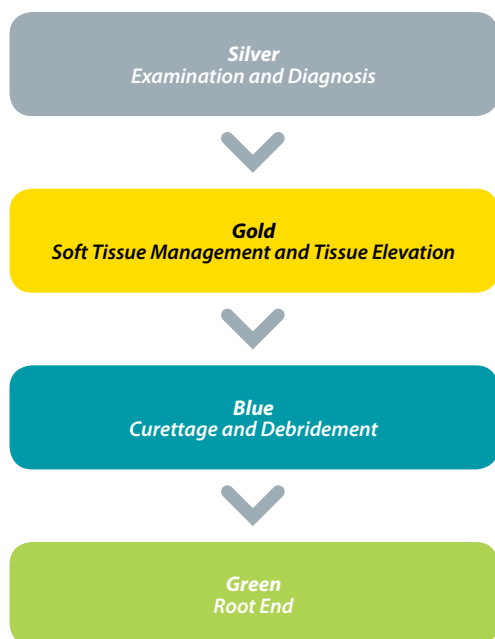


VIBRAPOST - Post Removal
Dr. Carlos Saucedo

JETIP Instrument Basic Set

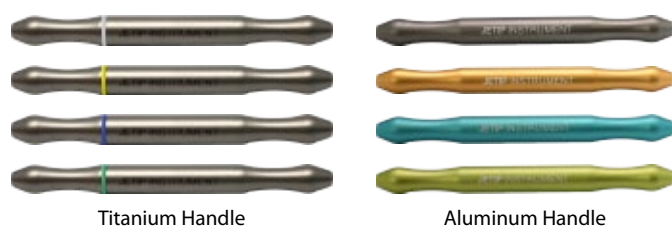


Color Coded by Procedural Steps



JETIP Instrument Handle

Titanium Handle Set & Aluminum Handle Set



JETIP Microsurgical Instrument

Color Coded by Procedural Steps

Comfortable Grip

Sleek Design

Basic Kit (Aluminum or Titanium Handle) Item Code :JISSB / TJISSB



Silver	JX1, JX2, JX5, JEX, JPP
Gold	JE1, JE2, JE3, JE4
Blue	JC1, JC2, JC3, JC4, JC9, JC10, JC11, JC12, JC13, JC14, JC15, JC16
Green	JM1, JM2, JM3, JM4, JB2, JP3, JP6, JP7
Micro Mirror	JIMM1, JIMM2, JIMM3, JIMMH
MTA Pallet	MTAP
B&L Wrench	WR01
Cassette	JISC2

Essencial Kit (Aluminum or Titanium Handle) Item Code : JISSE / TJISSE



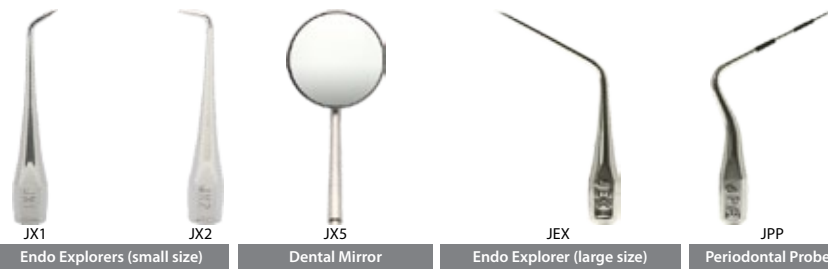
Silver	JX1, JX2
Gold	None
Blue	JC15, JC16
Green	JB2, JP3, JM3, JM4, JP6, JP7
Micro Mirror	JIMM1, JIMM2, JIMM3, JIMMH
MTA Pallet	MTAP
B&L Wrench	WR01
Cassette	JISC2

Deruxe Kit (Aluminum or Titanium Handle) Item Code : JISSD / TJISSD



List of Tips

Silver Examination and Diagnosis



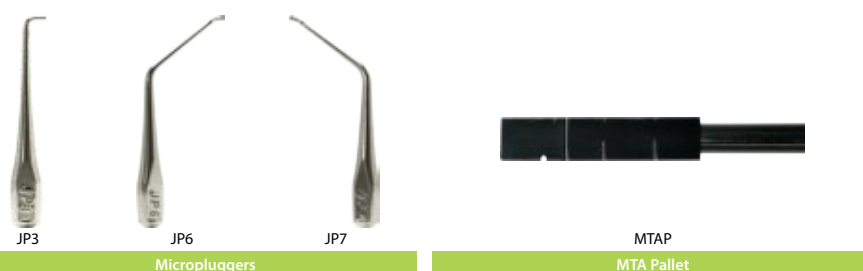
Gold Soft Tissue Management and Tissue Elevation



Blue Curettes and Debridement



Green Root End



* JB1 is not included in Basic Set.

JETIP Instrument Suture Set



Suture Set for Apicoectomy

Set of most used instruments - include a castroviejo, micro scissor, tissue forcep, and micro mirrors.

With high durability, it can be used longer despite many cleanings and sterilizations.

The ergonomic grip helps a dentist perform surgery longer and relieve fatigue.

Item Code : JISSS



Castroviejo
JICV



Micro scissors
JIMS



Tissue forcep
JITF



Blade handle
JIBH



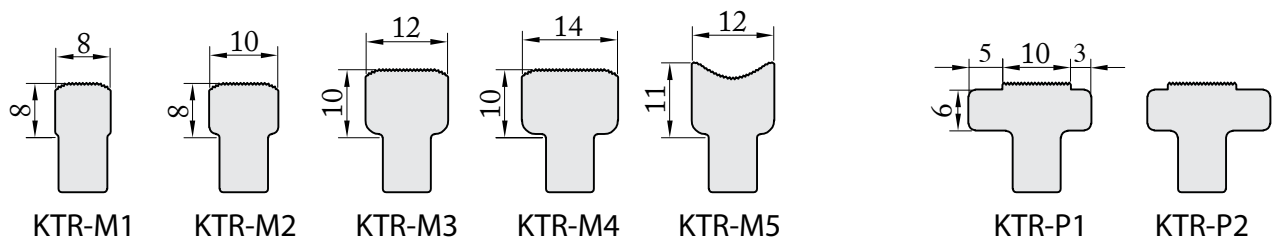
Micro mirror holder
JIMMH



Micro mirrors
JIMM 1,2,3

Bendable Periosteal Elevator for Surgical Treatment

KimTrac



Shape Memory

After being bent, it can be returned to its original shape. (NiTi Models)

Serrated Edges

Stably secures the cortical bone plate, regardless of its shape, due to the saw-toothed wheel at the end of the KimTrac.

Various Angles

Consists of three types of angles that make contact with the bony plate. It adheres well to both anterior and posterior locations by adjusting the left-right angle.

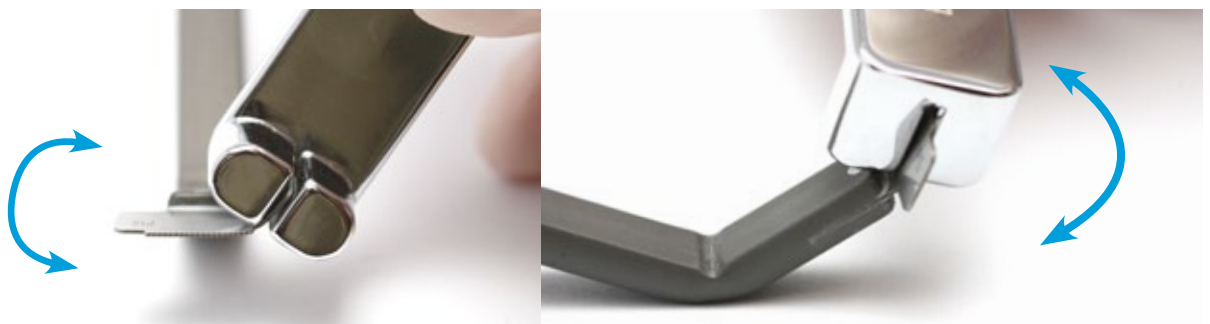
KimTrac WING

Autoclavable KimTrac Wing ensures easy flap retraction with highly improved visibility and accessibility of operation field.



KimTrac Wing

Item Code : KTW1(Wide type 10EA), KTW2(Long type 10EA), KBJ(KimTrac bending jig)



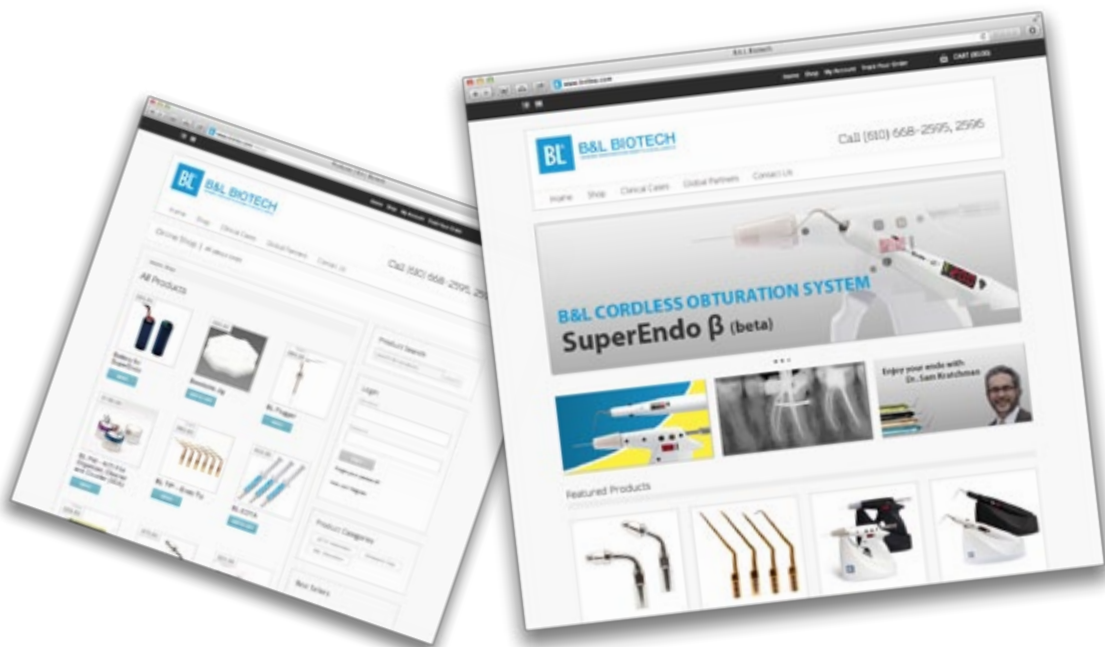
Free B&L Biotech App for the iPad!



iPad only



www.bnlbio.com



Come and check out our website!

Product information, clinical cases, video clips, global partner information and more!

Contact Information

Global Sales

Bruce D. Shefsky
bdshefsky@bnlbio.com

University Sales

Lori McCarty
lamccarty@bnlbio.com

Latin America Sales

Dr. Lissette Ramirez
drlissetteramirez@bnlbio.com

Repair Center

B&L Biotech USA
customerservice@bnlbio.com



View video clips at <http://www.youtube.com/bnlbio>

B&L Biotech USA, Inc.

225 E. City Avenue, Suite 107, Bala Cynwyd, PA 19004 USA
TEL. +1 (610) 668 2595
Toll free. (877) 452-2651 (Only USA)
FAX. +1 (610) 668-2597



EU Service Center

Fa. Kotec
Guerickestr. 3 10587 Berlin, Germany
TEL +49 30 3640 7896
FAX +49 30 3670 2366

www.bnlbio.com

09.2014



B&L Biotech USA, Inc.

225 E. City Avenue, Suite 107, Bala Cynwyd, PA 19004 USA

TEL +1 (610) 668 2595, (610) 668 2596

Toll free (877) 452-2651 (Only USA)

FAX +1 (610) 668-2597

www.bnlbio.com